

---

# ISLE OF MAN WALKING FESTIVAL

---

13 - 18 MAY 2012



ISLE OF MAN

[visitisleofman.com](http://visitisleofman.com)

INCLUDES THE FAMOUS 5 DAY RAAD NY FOILLAN COASTAL FOOTPATH WALK

# Faillt Erriu



## Welcome

Welcome to the Isle of Man - one of the most beautiful locations in the British Isles. Its stunning and varied landscape comprises austere moorland, lush valleys and wooded glens plus sandy beaches and rugged cliffs.

Discover all these delights with our specially designed Walking Festival programme. Walks can be found throughout the Island, and are timed to coincide with our public transport - including our unique Victorian era steam and electric railways.

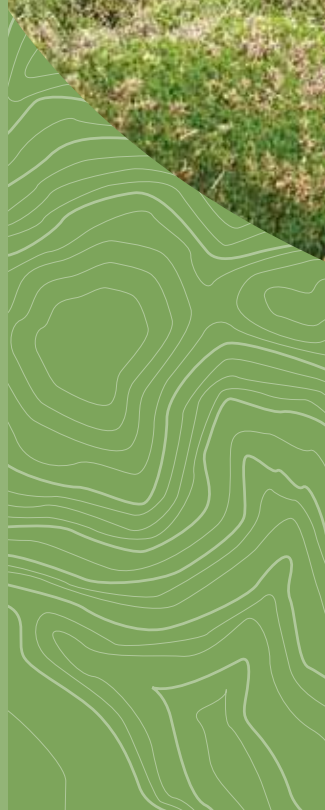
All our walks are led by experienced leaders. They are there to ensure that the correct routes are followed as well as providing interesting information on our beautiful scenic landscape, and in many cases, our fascinating mix of Celtic and Viking Heritage. The Isle of Man's unique and varied culture is as evident today as it was thousands of years ago. Our walks will take you on a journey to uncover this amazing history throughout the week whilst you will also have plenty of opportunities to sample some of the Island's arts, folklore and cuisine along the way.

We would like to extend best wishes to all of our walkers - please enjoy your stay and come back and see us again soon!

Isle of Man Tourism

## Contents

Travel and Accommodation	Page 2
Where to Eat	Page 3
Coast - Coastal Path Walk	Page 4
History - Millennium Way	Page 6
History - Herring Way	Page 7
Festival Walks	Page 8
Specialist Walking Tours	Page 14
Social Programme	Page 15
Calendar of Events	Page 16
Booking Form	Page 17



# 5 DAY CHALLENGE:

*Raad ny Foillan*

see page 4

“ ”

*Many thanks for the excellent organisation of this splendid friendly event. I know the Island very well after 3 festivals and I don't think I would ever run short of walks!*

**Phil Catterall, Ryedale Walking Group**



*Discover wonderful heritage sites*

*Uncover Enchanted Places*



# Travel & Accommodation

## BED & BREAKFAST PACKAGES

Travel by Sea	Guesthouse	3 Star	4 Star
Any Port	<b>£350</b>	£420	£470
Travel by Air	Guesthouse	3 Star	4 Star
From LPL or MAN	£422	£490	£540

**Packed lunch available to pre book or on arrival with 24 hours notice each day (from £4.50).**

Prices are based on 2 sharing double / twin room, include 6 nights Bed & Breakfast, return travel and walking festival package. Single room supplements apply.

## DINNER, BED & BREAKFAST PACKAGES

Travel by Sea	3 Star Guesthouse	4 Star Guesthouse	4 Star Hotel
Any Port	<b>£485*</b>	£530*	£555
Travel by Air	3 Star Guesthouse	4 Star Guesthouse	4 Star Hotel
From LPL or MAN	£557*	£602*	£627

**\*Includes 5 days packed lunches (Monday - Friday).**

Prices are based on 2 sharing double / twin room, include 6 nights Dinner Bed & Breakfast, return travel and walking festival package. Single room supplements apply.

### WALKING FESTIVAL PACKAGE INCLUDES:

- Travel pass for all forms of public transport during the festival (coastal path not included)
- All chosen walks, plus optional Tynwald Chambers Tour and Ghost Tours
- Admission to all festival social events and welcome reception (Sunday 13 May)

## COASTAL WALK PACKAGES

Travel by Sea	3 Star Guesthouse	3 Star Hotel	
Any Port	<b>£480</b>	£585	
Travel by Air	3 Star Guesthouse	3 Star Hotel	
From LPL or MAN	£552	£657	

**All coastal package prices include 5 days packed lunches (Monday - Friday).**

Prices are based on 2 sharing double / twin room, include 6 nights Dinner Bed & Breakfast, return travel, daily transfers to / from walk, all social events and welcome reception. Single room supplements apply.

**Please note Island freedom ticket not included (private transport only).**

All packages are available from most major UK Airports (supplements apply – quotes on request): Belfast, Blackpool, Birmingham, Dublin, Edinburgh, Gatwick, Glasgow, Gloucester, Leeds, London City, Luton, Southampton

**How to Book: Simply contact Isle of Man Event Services Ltd on 01624 664460 or by email on [info@iomevents.com](mailto:info@iomevents.com)**

Supplements apply for Single rooms (early booking advisable) and car on ferry. All prices are subject to availability at the time of booking. Isle of Man Event Services Ltd act in respect of air inclusive packages as retail agents for CI Travel Group Ltd ATOL 1965.

**NEW!**

**PACKED LUNCHES**

Available with every travel package!



Recharge your



**3 COURSE  
WALKERS DINNER**  
★ **JUST £18pp** ★

Available Monday to Friday at the Palace Hotel. Pre-booking through Isle of Man Event Services essential. Admission by voucher only.



batteries with a Manx meal



**WHERE TO EAT**

**TASTE ISLE OF MAN MEMBERS**

- 01 14 North
- 02 The Alpine Coffee Shop
- 03 The Bay Room Restaurant
- 04 Chillies Indian Cuisine
- 05 Copperfield's Restaurant
- 06 The Courthouse
- 07 The Curry Lounge
- 08 Davison's at the Villa
- 09 HQ Bar & Restaurant

- 10 Imperial Dragon Restaurant
- 11 Isola
- 12 The Italian Job
- 13 Jaberwocky
- 14 Jaks Bar & Restaurant
- 15 L'Experience
- 16 Nobles Park Cafe
- 17 Tanroagan
- 18 Tapas Spanish Restaurante
- 19 The Welbeck Hotel

# Coast

## **CPW: Coastal Path Walk** *(Monday 14th to Friday 18th)*

Distance: 95miles / 152km - Grade A (Experienced Walkers Only)

The Isle of Man Coastal Path is a demanding but highly rewarding experience. This walk should only be undertaken if you are an experienced walker with the ability to average twenty miles per day over the five consecutive days. All those who start the walk should do so with the intention of completing all five days. Each day we meet at the Villa Marina for an 08:30 start, taking packed lunches and plenty of water before being transported to our day start point. At the end of each day's walk we are returned to The Villa Marina around 17:30.

We start with the stunning coastline of Marine Drive and head out to the main headland coast at Meary Veg. From here we hug the coastline with views south to Langness and inland to the dramatic backbone ridge running down the centre of the Island. Our route continues to Castletown, the ancient capital of the Island and on to Port St Mary a picturesque fishing village on the south east coast where we conveniently stop at the Albert Hotel and Pub.

Day two is by far the most demanding. We immediately take the coast hugging path to the famous Chasms and the dramatic cliffs at Spanish Head. From here we see the Calf of Man and The Sound, where grey seals have taken up residence. After The Sound we follow the coastal path into Port Erin and make the steep climb up to Bradda Head before dropping into Fleshwick. However, before lunch we need to make a further height gain towards The Sloc making this a long and arduous morning walk. After lunch a long steady climb takes us to the summit of Cronk Ny Arrey Laa from where we descend again, finishing the day at Dalby.

After day two, day three is almost a stroll! We follow the coast north from Glen Maye into Peel where an early ice cream is acceptable as we stroll along the promenade having passed by the famous Peel Castle. Our coastal path takes us onto the disused steam railway line outside Peel all the way into Glen Mooar where we make our first introduction to beach walking as we walk in to Glen Wyllin which is our lunch stop at Kirk Michael. After lunch a short section of railway line leads us to the north western stretch of beach.

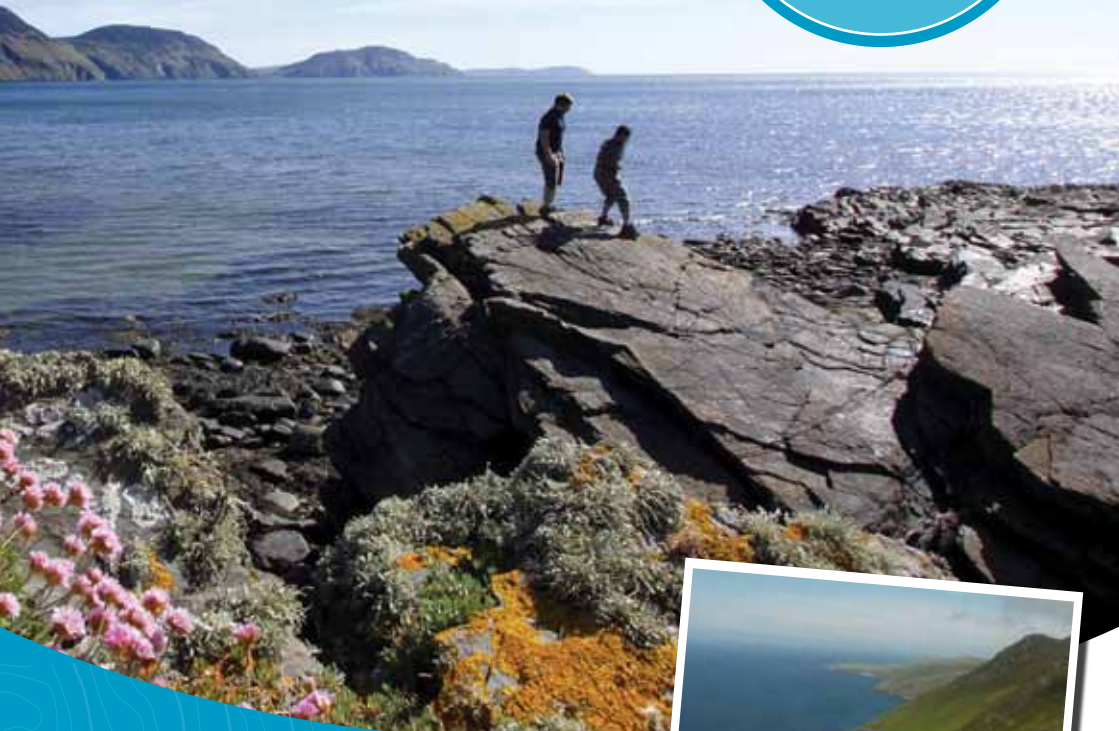
Day four is not for the fainthearted as we will spend a great deal of time on the sand and shingle beaches which can be both easy and difficult depending on the height of the tide. From Blue Point we can move off the beach onto the Ayres where a bird sanctuary and visitors centre has been established. After The Point we see Ramsey, and Maughold Head which is our goal to end this fourth day.

We start the final day in the quaint village of Maughold and follow the coast to Port Mooar. We then rise over Ballajora passing an ancient burial ground before descending onto Port Cornaa beach. Joining the road at Glen Mona, we arrive in the delightful fishing village of Laxey and take lunch on the beach or by the harbour. Depending on the tide, we take the sands or road out of Laxey and on to Garwick and Clay Head. Almost home now, we take the road past Old Lonan Church to Groudle Glen and onto the final leg around Onchan Head to see the welcoming site of Douglas promenade and our finishing line!



# 5 DAY CHALLENGE:

*Raad ny Foillan*



## Spot something special!

The Isle of Man is one of the best places in Britain to spot the awesome Basking Shark. Look out too for Bottlenose Dolphins, seals and a wide array of sea birds.



Stunning Coastal views



Traverse Spectacular Sea Cliffs



# History

## ★ NEW DIRECTION ★

### **MW: The Millennium Way** (Monday 14th & Tuesday 15th)

Day One Distance: 14 miles / 22.5km - Grade A (Experienced Walkers Only)

Day Two Distance: 10.1 miles / 16.2km - Grade A (Experienced Walkers Only)

*Founded in 1979 to coincide with the millennium year of Tynwald, the Millennium Way was one of the first long-distance footpaths on the Isle of Man. It stretches from Ramsey in the north to Castletown in the south and runs through the centre of the Island, passing appropriately the ancient site of Tynwald on the way. Though this can be walked in one day, for the Walking Festival it is divided roughly equally over two days.*

#### DAY ONE - CASTLETOWN TO COLBY

Starting from Castletown this is the easier of the two days walking, going through Silverdale we pass Rushen Abbey and Monks Bridge before arriving at Silverdale Glen and the opportunity to ride and operate the unique Victorian merry go round. We continue through the hamlet of St Marks then pass the ancient and interesting Campbells Bridge, St Patrick's Chair and the ancient parish church of Marown. We finish the day with a nice stroll down to Crosby, for the return to Douglas.

Start: Castletown Bus Stop 09.45

Getting There: 09:10 Bus Service 2 from Douglas Bus Station

#### DAY TWO - CROSBY TO RAMSEY

Starting today from Crosby this is the challenging day of the millennium way. Heading through Baldwin take the opportunity to visit St Lukes Church and Keeill Abbam (the old site for the outside assembly of Tynwald parliament). Climbing through Sulby and over the Sulby river we skirt around the back of Snaefell mountain to start the ascent of the northern hills and moorlands with excellent views of the Galway hills in Scotland and the English lake district. A descent through Sky Hill plantation brings us into Ramsey and an end to excellent and hard days walking.

Start: Crosby Post Office 09:30

Getting There: 09:10 Bus Service 5 from Douglas Bus Station



The Herring

# LONG DISTANCE

Millennium Way  
& Herring Way



g way south of Peel

## **BS: Bayr Ny Skeddan - The Herring Way** (Thursday 17th)

Distance: 15.5miles / 24.9km - GradeA (Experienced Walkers Only)

This beautiful path is dedicated to Manx fisherman who journeyed between Peel and Castletown to sell their wares. Starting with an undulating walk along the cliff tops to reach Glen Maye, the path then heads through the plantation of Glen Rushen to Round Table, sited at the top of Dalby Mountain. Heading downhill through lanes and fields, the walk continues south, eventually joining the Millennium Way that leads us into Silverdale Glen. From here we pass the Monks Bridge and Rushen Abbey before reaching the historic town of Castletown with its marvellous castle.

Start: Peel Town Hall 10:00

Getting There: 09:10 Bus Service 5 from Douglas arrives 09:49

**MON1: Laxey - Snaefell Mines - Slieau Lhean - Laxey**

- Distance: 8.2 miles / 13.1km (Grade A)
- Summary: This walk is a classic to admire the scenery of this beautiful Island. Travelling first in a valley, then up onto the top of Slieau Lhean - still in the shadow of Snaefell.
- Starting from Laxey village, we pass the famous Laxey Wheel before continuing on and up through the picturesque hamlet of Agneash and the route through the valley of the disused Snaefell Mines. A very steep yet short climb takes us up to and along the ridge of Slieau Lhean. We then start our descent towards Laxey which offers excellent views of the eastern coast and a visit to King Orry's Grave.
- Start / Finish: Laxey Tram Station
- Start Time: 10:15
- Getting There: 09:40 Tram from Douglas (Derby Castle), arrives 10:10

**MON2: Port St Mary to Port Erin**

- Distance: 7.8 miles / 12.5km (Grade B)
- Summary: A consistent festival favourite, this is one of the most picturesque of the Island's walks. Breezing above the Chasms and around the coastline at the southern end of the Island. Begins and ends with an optional steam-train ride from Douglas.
- Undulating coastline walk, close to steep drops in places, and with some steep ascents and descents.
- Start / Finish: Port St Mary Railway Station
- Start Time: 10:50
- Getting There: 9.50 Bus Service 1 from Douglas, arrives 10.47.

**MON3: Glen Maye - Coastal Footpath - Corrin's Tower - Fenella Beach**

- Distance: 4.2 miles / 6.7km (Grade B)
- Summary: We start this walk by visiting one of the nicest waterfalls on the Island at Glen Maye, then we have a meander down the glen to the sea. A wonderful undulating walk along the coastal footpath brings us to Peel. The walk offers splendid views over Peel and some of the Island's most rugged coastline, plus the chance to enter and climb Corrin's Tower and hear the tragic yet uplifting story of the Corrin family.
- Start / Finish: Glen Maye Car Park
- Start Time: 10:00
- Getting There: 09:10 Bus Service 4 from Douglas to Niarbyl, arrives Glen Maye 09:59

**MON4: Douglas - Fairy Bridge - Port Soderick - Marine Drive - Douglas**

- Distance: 7.9 miles / 12.7km (Grade C)
- Summary: Heading out of Douglas we go around the back of the Nunnery and along side the golf course. This walk then goes past the original fairy bridge before following the narrow gauge railway line to Port Soderick. The walk back to Douglas goes along the now disused Marine Drive, with excellent cliff top views looking out to sea with views of the English coastline on a clear day.
- Start / Finish: Douglas Railway Station
- Start Time: 11:00
- Getting There: Douglas Railway Station (The station can be found at the bottom of North Quay)

## MON5: Castletown - Scarlet - Poyllvaish - Witches Mill - Castletown

- Distance: 4 Miles/6.4 Km (Grade C)
- Summary: Walk and visit on the same day, this walk is designed for a nice two hour stroll with the afternoon free to explore the castle or museums of Castletown.
- The walk starts from the ancient town of Castletown, with a stroll along part of the Coastal footpath taking in the marvellous views of the southern hills. Heading inland we continue along nice green pathways passing Poyllvaish quarry with its marble stone and the witches mill. After arriving back into Castletown enjoy at your own leisure the history of this ancient town.
- Start/Finish: Castletown Bus Stop
- Start Time: 10:05
- Getting There: 09:30 Bus Service 1 from Douglas, arrives Castletown 10:01



## EVENTS - TUESDAY 15th MAY

### TUE1: Port Erin to Peel

- Distance: 13.5 miles / 21.7km (Grade A)
- Summary: This is an outstanding walk which taken in full demands a good deal of stamina as it involves three significant ascents, two from sea level. The coastal scenery throughout is of the highest order.
- Three steep ascents and descents come in the first part of the walk, with undulating coastline and paths near cliff edges to follow.
- Start / Finish: Start at Port Erin Railway Station, finish at Peel Castle
- Start Time: 10:00
- Getting There: 09:10 Bus Service 2 from Douglas, arrives Port Erin 09:54

### TUE2: Port Erin - Meayll - Cregneash - Chasms - Port Erin

- Distance: 4.8 miles / 7.7km (Grade B) PLEASE NOTE: THIS WALK IS LIKELY TO FINISH AT 19.00
- Summary: A lovely snaking walk that aims to get some of the best out of the central Meayll Peninsula and visits the thatched village of Cregneash. A long steady climb on a road to Mull Hill, a couple of awkward stiles and some narrow paths above steep drops.
- Start / Finish: Port Erin Railway Station
- Start Time: 13:00
- Getting There: 11:50 Train from Douglas, arrives Port Erin 12:47

### TUE3: The Hibernian - Park Llewellyn - Corraney

- Distance: 4.4 miles / 7km (Grade B)
- Summary: This walk follows the Corraney Valley along the greenway track that climbs along the side of North Barrule to the ruins of a sheep farm called Park Llewellyn. We then descend to St Mary's Keeill and the remains of North Laxey Mines before returning along the mines track that runs along side the river to the Corraney bus stop.
- This is a nice inland valley walk.
- Start / Finish: Hibernia Bus Stop
- Start Time: 11:05
- Getting There: 10:15 Bus Service 3 from Douglas (Lord Street), arrives Hibernia 11:00

#### **TUE4: Colby Glen, Ballakilpheric and Baie ny Carrickey**

- Distance: 4.3 miles / 6.9km (Grade C)
- Summary: A lovely burn and wooded gorge lead onto quiet country lanes before heading for the wide expanse of the Baie ny Carrickey. Generally level on good paths and lanes.
- Start / Finish: Colby Glen Railway Station
- Start Time: 10:45
- Getting There: 09:50 Train from Douglas, arrives Colby 10:39
- 

#### **TUE5: Ramsey Town Boundary Walk**

- Distance: 5.5 miles / 8.8km (Grade C)
- Summary: From Ramsey Tram Station, head over the swing bridge and along the promenade before heading onto the outskirts of Ramsey over the Sulby River and into Glen Auldyn. We then climb above Ramsey to the Albert Tower before entering Ballure Glen and a walk along the beach back to Ramsey.
- This lovely walk meanders around the outskirts of the Island's second largest town. With a mixture of different terrain, giving an excellent chance to see and hear about the Albert Tower. This walk gives you the ideal opportunity to explore Ramsey in a different light.
- Start / Finish: Ramsey Plaza Tram Station
- Start Time: 11:30
- Getting There: 10:10 Tram from Douglas (Derby Castle), arrives 11:25



### **EVENTS - WEDNESDAY 16th MAY**

#### **WED1: Laxey - Snaefell - North Barrule - Ramsey**

- Distance: 6.3 miles / 10.2km (Grade A)
- Summary: Starting from Laxey Station, the Manx Electric Railway will take us to the top of Snaefell Mountain (2,036ft). From here we head downhill to the Black Hut and cross the Mountain Road (part of the famous TT races course). From here an uphill walk to Clagh Ouyr starts a breathtaking ridge walk, with views across the whole northern part of the Island to reach the top of North Barrule. A VERY STEEP decent takes us into the Ballure reservoirs and plantations before finishing this hard walk in Ramsey.
- A long hard walk with steep climbs. A mix of open moorland and established paths.
- Start / Finish: Laxey Tram Station
- Start Time: 10:15
- Getting There: 09:40 Tram from Douglas (Derby Castle) arrives 10:10
- 

#### **WED2: Ballaugh - Slieau Curn - Slieau Dhoo - Ballaugh**

- Distance: 10.8 miles / 17.3km (Grade A)
- Summary: In spite of its length, this walk is fairly straight forward, but does offer the option of bagging Slieau Freoghane though this will have to be left to the leader's judgement.
- A long steady ascent to begin with and then a rough track back down.
- Start / Finish: The Raven Pub, Ballaugh
- Start Time: 11:30
- Getting There: 09:10 Bus Service 5 from Douglas, arrives Ballaugh 10:10. (Times subject to change with new bus timetable)

### **WED3: Peel, Heritage Trail, Tynwald, Peel**

- Distance: 8.8 miles / 14.1km (Grade B)
- Summary: This is a lovely varied walk with not too much effort. Starting from Peel, we head to St Johns via the Heritage Trail (an old railway track). At St Johns, don't miss the opportunity to visit the ancient parliament of Tynwald and the Arboretum. From here a steady climb takes us towards Lhergydhoo with some wonderful views of Peel and the west coast. A nice stroll along a section of the coastal footpath takes us back into Peel and gives us a chance to look round the oldest town on the Island.
- Start / Finish: Peel Town Hall
- Start Time: 10:20
- Getting There: 09:40 Bus Service 6 from Douglas, arrives Peel 10:17
- 

### **WED4: Smeale - The Ayres - Bride**

- Distance: 8.1 miles / 13km (Grade C)
- Summary: Covering the most northern part of the Island, this is a very flat walk. Meander along picturesque country lanes and carpeted grass of the Ayres passing the Ayres Lighthouse. Starting from the hamlet of Smeale we weave our way towards the Ayres. This natural nature area is a must see, with easy walking bringing us to the lighthouse on the Ayres. We wander along the beach before returning to country lanes and paths back to the village of Bride.
- Start / Finish: Smeale Bus Stop / Bride Village
- Start Time: 11:10
- Getting There: 09:45 Bus Service 3 from Douglas to Ramsey, arrives 10:37, then 10:43 Bus Service 20A, arrives 11:06
- 

### **WED5: Groudle Glen - Clay Head - Baldrine - Liverpool Arms**

- Distance: 5.5 miles / 8.8km (Grade B)
- Summary: This walk starts with a nice idyllic stroll through one of our many wonderful glens and a chance to see a very unusual waterwheel. Leaving the glen we then head along the back lanes of Lonan to visit one of the smallest and oldest churches on the Island with a collection of Celtic Crosses. The walk then continues through wetlands, cliff tops and into Garwick Bay. Climbing out of Garwick, we skirt the back of Baldrine to finish at the Liverpool Arms. Anyone with any energy left can continue back to Groudle Glen.
- Start / Finish: Groudle Tram Station
- Start Time: 11:00
- Getting There: 10:40 Tram from Douglas (Derby Castle), arrives 10:52
- 

### **WED6: Woodlands and Glens Walk (Glen Wyllin and Glen Mooar)**

- Distance: 4 miles / 6.4km (Grade C)
- Summary: Starting from the lovely camp site of Glen Wyllin, we go through the hamlet of Wyllin before heading up through the glen to give some excellent views of the Manx hillsides. A small section of minor country lanes takes us into Glen Mooar and gives us a chance to see Spooyt Vane (white spout) waterfall. A nice stroll along the beach brings us back to Glen Wyllin and the end of a very varied walk.
- Start / Finish: Glen Wyllin Entrance
- Start Time: 13:45
- Getting There: 12:40 Bus Service 6 from Douglas, arrives 13:33

**THU1: Crosby - Lhargee Ruy - Slieau Maggle - The Beary - Greeba Bridge**

- Distance: 9.9 miles / 15.9km (Grade A)
- Summary: Starting from the main road walk uphill north along the Millennium Way to the track leading throughout Cronk Breck. The metalled lane changes to grassy track on a long ascent leading to the saddle between Lhargee Ruy and Slieau Ruy affording unforgettable views of the middle hills and over Douglas. From here it is an easy level grass track with stunning views north and west. At Slieau Maggle plantation we turn south along a forester's track to return via The Beary to Greeba Bridge. A long hard climb into the heart of the Island's hills offering excellent views, before an easy descent.
- Start / Finish: Crosby Post Office / Greeba Bridge
- Start Time: 10:40
- Getting There: 10:10 Bus Service 5 from Douglas, arrives Crosby 10:30

**THU2: Maughold - Port Mooar - Port e Vullen**

- Distance: 5.4 miles / 8.6km (Grade B)
- Summary: This walk first visits the lovely bay of Port Mooar before heading along part of the Raad Ny Foillan to the village of Maughold where we will stop for picnic lunch. We will then continue along Maughold Brooghs to Port-e-Vullen and Port Lewague (including beach walk to Ramsey tide permitting). Some road walking and undulating coastal tracks.
- Start / Finish: Start at Ballajora Tram Stop. Finish at Bellevue Tram Stop/Ramsey
- Start Time: 10:45
- Getting There: 09:40 Tram from Douglas arrives Ballajora 10:43.

**THU3: Glen Maye - Slieau Whallian - St Johns**

- Distance: 3.7 miles / 5.9km (Grade B)
- Summary: Before starting this walk from Glen Maye, take the opportunity to visit and possibly photograph one of the Island's best waterfalls. Leaving Glen Maye, a very steep climb takes us on to Slieau Whallian offering beautiful views of the western coastline. The walk then continues with a steady hilltop stroll to the edge of Slieau Whallian Plantation before descending towards and on to St Johns. A visit to St Johns offers the opportunity to visit the excellent craft centre and arboretum. St Johns is also home to the famous Tynwald Hill - site of the world's oldest continuous parliament.
- Start / Finish: Glen Maye Car Park
- Start Time: 10:00
- Getting There: 09:10 Bus Service 4 from Douglas to Niarbyl arrives Glen Maye 09:59

**THU4: Castletown, Derbyhaven and Langness Coastline**

- Distance: 6.1 miles / 9.8km (Grade C)
- Summary: Beginning in Castletown, this outing simply explores the delectable coastline of Langness and the adjacent St Michael's Isle. A simple level walk throughout which can sometimes be a breezy affair!
- Start / Finish: Castletown - in front of Old House of Keys
- Start Time: 10:50
- Getting There: 10:10 Bus Service 2 from Douglas to Castletown, arrives 10:41.

## THU5: Ballaugh Curraghs

- Distance: Approx 2 hours easy walking (Grade C)
- Summary: The Ballaugh Curragh walk gives an opportunity to visit a unique wetland habitat that is home to numerous plant and bird species. Also, there may be a chance to catch a glimpse of a wild red-necked wallaby. Depending on the footwear, it may be possible to venture away from the pathways and explore some of its hidden secrets.
- Start / Finish: Ballaugh Curraghs Car Park
- Start Time: 13:45
- Getting There: 12:40 Bus service 6 from Douglas, arrives 13:41



## EVENTS - FRIDAY 18th MAY

### FRI 1: Laxey - Snaefell - North Barrule - Ramsey

- Distance: 6.75 miles / 11km (Grade A)
- Summary: Starting from Laxey Station, the Manx Electric Railway will take us to the top of Snaefell Mountain (2,036ft). From here we head downhill to the Black Hut and cross the Mountain Road (part of the famous TT races course). From here an uphill walk to Clagh Ouyr starts a breathtaking ridge walk, with views across the whole northern part of the Island to reach the top of North Barrule. A VERY STEEP decent takes us into the Ballure reservoirs and plantations before finishing this hard walk in Ramsey. A long hard walk with steep climbs. A mix of open moorland and established paths.
- Start / Finish: Laxey Tram Station
- Start Time: 10:15
- Getting There: 09:40 Tram from Douglas (Derby Castle) arrives 10:10

### FRI2: Port St Mary to Port Erin

- Distance: 7.8 miles / 12.5km (Grade B)
- Summary: A consistent festival favourite, this is one of the most picturesque of the Island's walks. Breezing above the Chasms and around the coastline at the southern end of the Island. Begins and ends with an optional steam-train ride from Douglas.
- Undulating coastline walk, close to steep drops in places, and with some steep ascents and descents.
- Start / Finish: Port St Mary Railway Station
- Start Time: 10:45
- Getting There: 09:50 Train from Douglas, arrives Port St Mary 10:44

### FRI3: St Johns - Archallagan Plantation - St Johns

- Distance: 8.8 miles / 14.1km (Grade C+)
- Summary: This walk is a little bit more than a basic C grade walk but well worth the extra effort. Starting from St Johns, a gentle stroll along the old railway line to Crosby is a pleasant start with some nice views of Greeba Mountain. A short sharp climb up the road brings us to Marown Old Parish Church and a visit is recommended. The next section gives some breathtaking views of the Island's countryside and coastal areas before going for a short stroll through Archallagan Plantation. The way ahead now is all down hill passing the well kept ruins of Comelly Mines and marvellous stables on the way back to St Johns.
- Start / Finish: Tynwald Hill, St Johns
- Start Time: 10:45
- Getting There: 10:10 Bus service 5 from Douglas, arrives St Johns 10:37

#### **FRI4: Silverdale Glen - Grenaby - Rushen Abbey - Ballasalla**

Distance: 5.3 miles / 8.5km (Grade C)

Summary: Starting from the railway station a stroll through the village of Ballasalla takes us through the ford and along to the old monks path to Silverdale Glen, passing the oldest packhorse bridge on the Island. A nice easy stroll takes us back via Grenaby to Rushen Abbey. The Abbey is well worth a visit.

Start / Finish: Ballasalla Whitestone Pub

Start Time: 10:40

Getting There: 10:10 Bus Service 2 from Douglas, arrives 10:32

---

#### **FRI5: Forest and Glens Walk (Elfin Glen, Cloughbane, Lhergy Frissel)**

Distance: Approx 2 hours of easy walking (Grade C)

Summary: It is amazing to discover that a five minute walk from Ramsey takes you into some of the Island's most scenic glens and plantations. This is a walk that gives you the opportunity to see the Island's glens at their best. Although this is classed as a C walk, there are a few climbs, but not to be missed in order to get the best views. Guided by an experienced forest warden, this walk is a wonderful way to finish off a superb week!

Start / Finish: Ramsey Tram Station

Start Time: 14:00

Getting There: 12:40 Tram from Douglas (Derby Castle), arrives 13:55

GRADE DESCRIPTION: Grade A = Difficult / Grade B = Moderate / Grade C = Easy

**Please note: Public transport services are recommendations only. A full bus and rail timetable is included in your welcome pack. Walk start times may be subject to change due to alterations in bus and rail timetable. You will be advised of any changes at registration.**

#### **ALSO INCLUDED IN THE FULL FESTIVAL PACKAGE**

##### **Monday 14th May - Tynwald Chambers Tour - Start: 18:00, Finish 20:00**

Tynwald is the oldest parliament in continuous existence in the world. The tour includes a visit to the recently refurbished legislative building and an insight into the rich architectural history retained within the three chambers - The House of Keys, Legislative Council and the High Court of Tynwald.

##### **Tuesday 15th May - Douglas Ghost Walk - Start: 20:00 @ Cafe Espresso**

Now the capital of the Isle of Man, Douglas is now the centre to the financial sector. But when the sun goes down and the offices go quiet, the past begins to come to life. Hear about haunted hotels, a ghostly office, a creepy graveyard and the ghost of a nurse that still haunts the old hospital.

##### **Wednesday 16th May - Peel Ghost Walk - Start: 20:00 @ House of Manannan, Peel**

On the west of the Island, is the old fishing town of Peel. Walk the streets and lanes of this truly Manx town and hear ghostly stories of the terrifying black dog; The Moddey Dhoo. Of ghostly carriages, icy hands that grip you as you lie in bed and an old school with it's ghostly pupil that still remains.

##### **Thursday 17th May - Castletown Ghost Walk - Start: 20:00 @ Glue Pot Pub, Castletown Harbour**

The Island's original capital, Castletown was once a place of power; the courts and of course, punishment. As you walk these ancient streets you will hear tales of the ghostly servant Annie, the Woman in Black, the last Manx witch to be burnt at the stake and some of the most grisly hangings and other punishments.





## **SOCIAL PROGRAMME**

*All social events are held in the Villa Marina situated on Douglas Promenade and commence at 20.00 each evening.*

### **Sunday 13th May - Registration - Villa Marina from 19:00**

Register for your walks and collect your welcome pack. Relax with a glass of wine and a hot pot buffet and meet your fellow walkers and walk leaders.

### **Monday 14th May - Strictly Manx Dancing with a few laughs thrown in!**

An evening of traditional Manx dance followed by the fantastic comedian Bill Woolland.

### **Tuesday 15th May - Getting up to Shenanigans**

Shenanigans Banned is a rip roaring band that specialises in putting a Shenanigans twist to traditional folk songs.

### **Wednesday 16th May - Free 'Tenners' on a Wednesday night!**

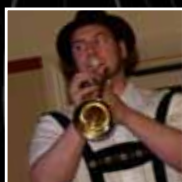
The Lon Dhoo MaleVoice Choir provide an evening of entertainment not to be missed.

### **Thursday 17th May - Eyes Down and shake your Legs II with the 60's DJ!**

An evening of bingo entertainment followed by a chance to dance to the 60's music.

### **Friday 18th May - A night out with plenty of Oomph!**

Enjoy the final evening of entertainment with Baron Otto's Blaskapelle Oompah Band. During the evening participants of the 95 mile coastal path are presented with a commemorative certificate.



## CALENDAR OF EVENTS:

	Ref	Walk / Event Title
<b>Sunday 13th May</b>		Registration and Welcome
<b>Monday 14th May</b>	MON1	Laxey - Snaefell Mines - Slieau Lhean - Laxey
	MON2	Port St Mary to Port Erin
	MON3	Glen Maye - Coastal Footpath - Corrin's Tower
	MON4	Douglas - Fairy Bridge - Port Soderick - Marine Drive
	MON5	Castletown - Scarlett - Poylvaaish - Witches Mill
	MON6	Tynwald Chambers Tour
	MONS	Manx Dancing and Comedian
	MOND	Walkers Dinner at the Palace Hotel
<b>Tuesday 15th May</b>	TUE1	Port Erin to Peel
	TUE2	Port Erin - Meayll - Cregneash - Chasms - Port Erin
	TUE3	The Hibernian - Park Llewellyn - Corran
	TUE4	Colby Glen - Ballakilpheric - Baie ny Carrickey
	TUE5	Ramsey Town Boundary Walk
	TUE6	Douglas Ghost Walk
	TUES	Shenanigans Banned
	TUED	Walkers Dinner at the Palace Hotel
<b>Wednesday 16th May</b>	WED1	Laxey - Snaefell - North Barrule - Ramsey
	WED2	Ballaugh - Slieau Curn - Slieau Dhoo - Ballaugh
	WED3	Peel - Heritage Trail - Tynwald - Peel
	WED4	Smeale - The Ayres - Bride
	WED5	Groudle Glen - Clay Head - Baldrine - Liverpool Arms
	WED6	Woodlands and Glens Walk (Glen Wyllin/Glen Mooar)
	WED7	Peel Ghost Walk
	WEDS	Lon Dhoo Male Voice Choir
	WEDD	Walkers Dinner at the Palace Hotel
<b>Thursday 17th May</b>	THU1	Crosby - Lhargee Ruy - The Beary - Greeba Bridge
	THU2	Maughold - Port Mooar - Port-e-Vullen
	THU3	Glen Maye - Slieau Whallian - St Johns
	THU4	Castletown - Derbyhaven - Langness Coastline
	THU5	Ballaugh Curraghs
	THU6	Castletown Ghost Walk
	THUD	Walkers Dinner at the Palace Hotel
<b>Friday 18th May</b>	FRI1	Laxey - Snaefell - North Barrule - Ramsey
	FRI2	Port St Mary to Port Erin
	FRI3	St Johns - Archallagan Plantation - St Johns
	FRI4	Silverdale Glen - Grenaby - Rushen Abbey - Ballasalla
	FRI5	Forest and Glens Walk (Elfin Glen, Lhergy Frissel)
	FRIS	Oompah Band and Presentation
	FRID	Walkers Dinner at the Palace Hotel
<b>Monday 14th - Friday 18th May</b>	CPW	Coastal Path Walk
<b>Monday 14th &amp; Tuesday 15th May</b>	MW	The Millennium Way
<b>Thursday 17th May</b>	BS	Bayr Ny Skeddán - The Herring Way

# ISLE OF MAN SUMMER WALKING FESTIVAL 2012

## SCHEDULE & BOOKING FORM

It is recommended that you book your places as early as possible as numbers on some walks may be limited.

**Parents are solely responsible for deciding whether any walk is within their child's / children's capabilities.**

---

---

Name: \_\_\_\_\_

Address: \_\_\_\_\_

\_\_\_\_\_

\_\_\_\_\_

Telephone: \_\_\_\_\_ Mobile: \_\_\_\_\_

Email: \_\_\_\_\_

### Payment method .....

Cheque  Total amount enclosed (payable to Isle of Man Events Services Ltd.) £ \_\_\_\_\_

Please debit my Connect  Maestro  Or charge my Mastercard\*  Visa\*

**Please note:** A charge is made for Mastercard and Visa of 2% per booking.

Card Number: \_\_\_\_\_

Card Holder's Signature: \_\_\_\_\_ Maestro Card Issue No.: \_\_\_\_\_

Card Valid From: \_\_\_\_\_ Expiry Date: \_\_\_\_\_

*I confirm I am over the age of 18.*

Signed: \_\_\_\_\_ Date: \_\_\_\_\_

**Please return completed form to:** Isle of Man Walking Festival Office, c/o Isle of Man Event Services Ltd.  
26a Duke Street, Douglas, Isle of Man, IM1 2AY. Telephone: 01624 664460.

For further information about the Isle of Man Walking Festival and about travel and accommodation, please contact the Festival Booking Office on 01624 664460 or visit our website: [www.isleofmanwalking.com](http://www.isleofmanwalking.com)

**Data Protection:** Information you provide will be used by the Isle of Man Department of Economic Development in accordance with the Data Protection Act 2002 for the purposes of administration, research, analysis and to inform you of relevant marketing information. We will not share your details with any third parties.

Please send me relevant information and offers from the Isle of Man Government  (tick box)

---

**PLEASE TURN OVER AND SELECT YOUR WALKS**

---

---

The following prices apply to those not on the full festival package. However, all walkers should indicate their choice of walk and numbers below. I wish to book the following walks and social events (child price applies to 12 years and under):

Ref	Walk / Event Title	Ticket Price		No. of Tickets		Cost
		Adult	Child	Adult	Child	£
MON1	Laxey - Snaefell Mines - Slieau Lhean - Laxey	£5.00	£2.50			
MON2	Port St Mary to Port Erin	£5.00	£2.50			
MON3	Glen Maye - Coastal Footpath - Corrin's Tower	£5.00	£2.00			
MON4	Douglas - Port Soderick - Marine Drive	£4.00	£2.00			
MON5	Castletown - Scarlett - Poyllvaish - Witches Mill	£4.00	£2.00			
MON6	Tynwald Chambers Tour	FREE	FREE			
MONS	Manx Dancing and Comedian	£5.00	£5.00			
MOND	Walkers Dinner at the Palace Hotel	£18.00	£18.00			
TUE1	Port Erin to Peel	£5.00	£2.00			
TUE2	Port Erin - Cregneash - Chasms - Port Erin	£4.00	£2.00			
TUE3	The Hibernian - Park Llewellyn - Corrary	£4.00	£2.00			
TUE4	Colby Glen - Ballakilpheric - Baie ny Carrickey	£4.00	£2.00			
TUE5	Ramsey Town Boundary Walk	£4.00	£2.00			
TUE6	Douglas Ghost Walk	£2.00	FREE			
TUES	Shenanigans Banned	£5.00	£5.00			
TUED	Walkers Dinner at the Palace Hotel	£18.00	£18.00			
WED1	Laxey - Snaefell - North Barrule - Ramsey	£5.00	£2.00			
WED2	Ballaugh - Slieau Cum - Slieau Dhoo - Ballaugh	£4.00	£2.00			
WED3	Peel - Heritage Trail - Tynwald - Peel	£4.00	£2.00			
WED4	Smeale - The Ayres - Bride	£4.00	£2.00			
WED5	Groudle Glen - Baldrine - Liverpool Arms	£4.00	£2.00			
WED6	Woodlands and Glens Walk	£4.00	£2.00			
WED7	Peel Ghost Walk	£4.00	£2.00			
WEDS	Lon Dhoo Male Voice Choir	£5.00	£5.00			
WEDD	Walkers Dinner at the Palace Hotel	£18.00	£18.00			
THU1	Crosby - Lhargee Ruy - The Beary - Greeba	£5.00	£2.00			
THU2	Maughold - Port Mooar - Port-e-Vullen	£4.00	£2.00			
THU3	Glen Maye - Slieau Whallian - St Johns	£4.00	£2.00			
THU4	Castletown - Derbyhaven - Langness Coastline	£4.00	£2.00			
THU5	Ballaugh Curraghs	£4.00	£2.00			
THU6	Castletown Ghost Walk	£4.00	£2.00			
THUS	Bingo and 60's Night	£5.00	£5.00			
THUD	Walkers Dinner at the Palace Hotel	£18.00	£18.00			
FRI1	Laxey - Snaefell - North Barrule - Ramsey	£5.00	£2.50			
FRI2	Port St Mary to Port Erin	£5.00	£2.50			
FRI3	St Johns - Archallagan Plantation - St Johns	£5.00	£2.00			
FRI4	Silverdale Glen - Rushen Abbey - Ballasalla	£4.00	£2.00			
FRI5	Forest and Glens Walk (Elfin Glen/Lhergy Frisse)	£4.00	£2.00			
FRIS	Oompah Band and Presentation	£5.00	£5.00			
FRID	Walkers Dinner at the Palace Hotel	£18.00	£18.00			
CPW	Coastal Path Walk	£85.00	N/A			
MW	The Millennium Way	£10.00	£5.00			
BS	Bayr Ny Skeddán - The Herring Way	£5.00	£2.50			
FP	Festival Package (inclusive of all walks, events and transport)	£85.00	£45.00			

I intend to use public transport  I will make my own transport arrangements  (please tick one)